

*User's manual*

# Pressurized enclosure system F850U



manual rev.2



**Gönnheimer  
Elektronik GmbH**

<http://www.goennheimer.de> Email: [info@goennheimer.de](mailto:info@goennheimer.de)



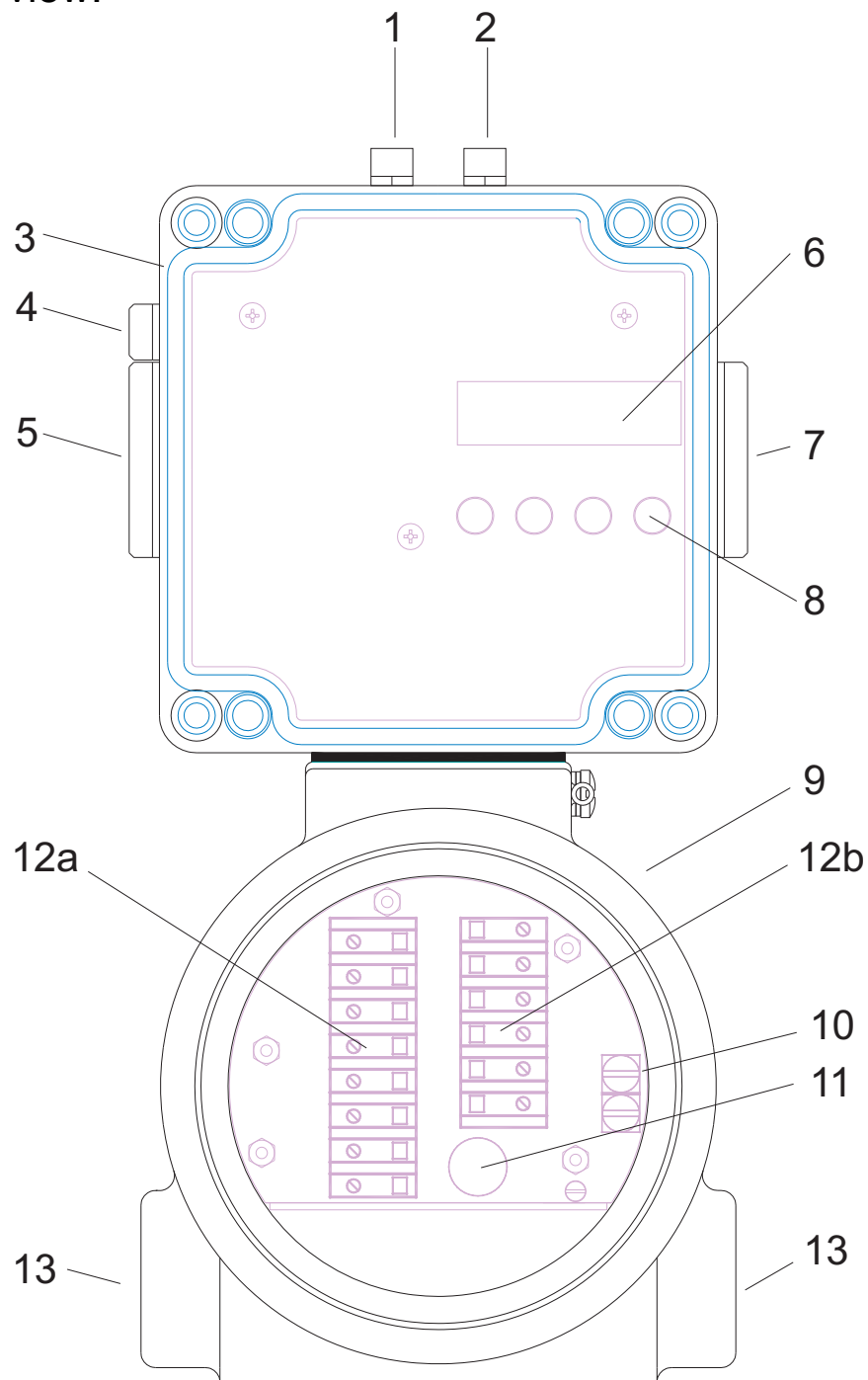
Zert. Reg. Nr. Q1 0297038

Dr.-Julius-Leber-Straße 2  
67433 Neustadt/Weinstraße  
Postfach 10 05 07  
67405 Neustadt  
phone: +49 (6321) 49919- 0  
fax: +49 (6321) 49919 - 41

## Contents

<b>1</b>	<b>GENERAL</b> .....	<b>4</b>
1.1	General safety guidelines .....	4
1.2	Safety Guidelines for explosion proofed devices .....	5
<b>2</b>	<b>INTRODUCTION: PRESSURIZED ENCLOSURE SYSTEM F850U</b> .....	<b>6</b>
2.1	Explosion protection: pressurized enclosure .....	6
2.2	Pressurized enclosure system F850U .....	6
2.2.1	F850U operation without solenoid valve .....	6
2.2.2	F850U operation using a solenoid valve .....	7
2.2.3	Integrating versus time based purging method .....	8
2.2.4	Pressurization using Continuous flow .....	9
2.3	Peripherals .....	10
<b>3</b>	<b>INSTALLING THE UNIT/ GETTING STARTED</b> .....	<b>11</b>
3.1	Classification .....	11
3.2	General requirements according to NFPA 496 .....	11
3.2.1	Enclosure .....	11
3.2.2	Protective gas system .....	11
3.2.3	Power equipment .....	11
3.2.4	Type X Pressurizing .....	11
3.3	Mounting .....	12
3.3.1	Control unit FS850U .....	12
3.3.2	Operation only with nozzle, without solenoid valve .....	12
3.3.3	Solenoid valves .....	13
3.3.4	Operator panel BT851 .....	13
3.3.5	Protective gas supply .....	13
3.4	Connecting and Commissioning .....	14
3.4.1	Intrinsically safe connectors of FS850U .....	15
3.4.2	Connection table FS850U and DW812 .....	15
3.4.3	Power terminals of FS850U .....	16
3.5	Default parameters .....	16
3.5.1	Reset .....	16
3.6	Automatic Purging process .....	17
3.7	Maintenance .....	17
3.8	Repairs .....	17
<b>4</b>	<b>OPERATION</b> .....	<b>18</b>
4.1	Display .....	18
4.2	Keyboard .....	18
4.3	How to enter and leave the bypass mode .....	19
4.4	Information during normal operation .....	20
4.5	Configuration .....	20
4.6	Alarm and malfunction indications .....	25
<b>5</b>	<b>FLOW CHARTS</b> .....	<b>26</b>
<b>6</b>	<b>ANNEX</b> .....	<b>31</b>
6.1	Tables .....	31
6.1.1	Size of orifice plate .....	31
6.1.2	Table: Resulting Flow rates by Nozzle and pre pressure .....	31
6.1.3	Table: Plate orifice Selection .....	31
6.2	Technical Details .....	32
6.3	Intrinsically safe ports .....	32
6.4	Block diagrams .....	33
6.5	Dimensions .....	34
6.6	Shut off schematic .....	35
6.7	Control drawing .....	36
6.8	List of Parameters .....	37

## Device overview:



1: Intrinsically safe connector – BT851  
 2: Intrinsically safe connector - Peripherals  
 3: Housing - Intrinsically safe control unit /  
 pneumatic devices  
 4: Connector reference pressure (environment)  
 5: Purge gas outlet  
 6: LC-Display

7: Purge gas inlet  
 8: Push buttons  
 9: Explosion proof housing - Clamping / power  
 section  
 10: Earth connection  
 11: Solenoid valve fuse  
 12a: Terminals 11-18; 12b: Terminals 19 - 24  
 13: Threads  $\frac{3}{4}$  inch NPT for cable gland/conduit

## 1 General

The symbols WARNING, CAUTION, NOTE



This symbol warns of a serious hazard. Failure to observe this warning may result in injury, death or the destruction of property.

**Warning**



This symbol warns of a possible failure. Failure to observe this caution may result in the total failure of the device, the system or even the whole application to which it is connected.

**Caution**



This symbol highlights important information.

**Note**

### 1.1 General safety guidelines



**Warning**

To ensure safe and reliable operation, the notes and warnings contained in this manual must be observed.

Caution, this device uses mains voltage! Failure to observe these warnings may result in serious personal injury or damage to property.

The commissioning of this device may only be carried out by technically qualified personnel who must observe local safety regulations.

Attention: Follow regulations for handling and installation of explosion proof devices in hazardous areas!

## 1.2 Safety Guidelines for explosion proofed devices

### Application and Standards

This instruction manual applies to explosion protected control systems of type of protection types below. This apparatus is only to be used as defined and meets requirements of NEC500-516.

It can be used in hazardous locations which are hazardous due to gases and vapours according to the explosion group and temperature class as stipulated on the type label. When installing and operating the explosion protected device as well as its periphery, the respective nationally valid regulations and requirements have to be observed.

### General Instructions

Work on electrical installations and apparatus in operation is generally forbidden in hazardous locations, with the exception of intrinsically safe circuits. In special cases work can be done on non-intrinsically safe circuits, on the condition that during the duration of such work no explosive atmosphere exists. Only explosion protected certified measuring instruments may be used to ensure that the apparatus is voltage-free. Grounding and short circuiting may only be carried out, if there is no explosion hazard at the grounding or short circuit connection.

The control unit has to have a back-up fuse as stipulated. The mains connection must have a sufficient short circuit current to ensure safe breaking of the fuse. To achieve an impeccable and safety device operation, please take care for adept transportation, storage and mounting, as well as accurate service and maintenance. Operation of this device should only be implemented by authorised persons and in strict accordance with local safety standards.

The electrical data on the type plate and if applicable, the "special conditions" of the test certificate of *UL of the FS850U* have to be observed.

For outdoor installation it is recommended to protect the explosion protected distribution and control system against direct climatic influence, e.g. with a protective roof. The maximum ambient temperature is 140°F (60°C) at T4, if not stipulated otherwise (please note temperature classes of hazardous area and refer to UL- certificate)

### Terminal compartment in explosion proof housing (Ex-d)

When closing the explosion proof housing, please ensure, that all gaskets of the housing remain effective, and that all threads are in proper condition.

Keep the explosion proof -box of the system always completely closed during normal operation and secure the top cover against loosening.

Unused entries at the explosion proof -housing have to be closed with adequate and certified blind plugs, which are secured against self-loosening and turning.

### Maintenance Work

The gaskets of all parts of the housings have to be checked for damages and replaced, if required. Terminals have to be tightened correctly. Possible changes in colour point to increased temperature. Cable glands, stopping plugs and flanges have to be tested for tightness and secure fitting.

### Intrinsically Safe Circuits

Installation instructions in the testing certificates of intrinsically safe apparatus have to be observed. The electrical safety values stipulated on the type plate must not be exceeded. This is also important at the intrinsically safe circuits. When interconnecting intrinsically safe circuits it is to be tested, whether a voltage and/or current addition occurs. The intrinsic safety of interconnected circuits is to be ensured!

## 2 Introduction: Pressurized enclosure system F850U

### 2.1 Explosion protection: pressurized enclosure

The use of pressurized enclosures allows the operation of 'non explosion protected' devices in hazardous areas inside division 1 or division 2 areas according to NEC 500. The protection type 'pressurisation' is based on the principle of maintaining a constant pressure using air or a protective gas to prevent an explosive mixture forming near the device inside the pressurized enclosure.

Before start-up, the pressurized enclosure must be purged with air or protective gas to remove any explosive mixture that may be inside the enclosure.

After this purging period the pressurized enclosure system has to monitor the pressure inside the cabinet. If this pressure drops below (at least) 0.8 mbar the control unit switches off the line voltage to secure the devices inside the cabinet. Therefore the devices inside the pressurized enclosure have to be wired according the shut off schematic in section 6.6.

### 2.2 Pressurized enclosure system F850U

The pressurized enclosure system F850U contains at least the control unit FS850U and an inlet nozzle or solenoid valve. The FS850U can be mounted in- or outside the enclosure. Furthermore, an operator panel is available for remote control. It is also possible to connect intrinsically safe peripherals (e.g. temperature, pressure sensors, switches) to the control unit FS850U.

The pressurized enclosure system F850U can be configured in different modes.

The following table gives a survey:

Only nozzle, (no solenoid valve)		Using solenoid valve and nozzle in line	
Manual mode	Simple mode	Automatic mode	Pressure control mode
Manual operated valve	Simple inlet nozzle	D-solenoid valve	P-solenoid valve

**Table 1: Survey of operation modes**

#### 2.2.1 F850U operation without solenoid valve

##### 2.2.1.1 Simple mode - Pressurization

The easiest way is to have only a nozzle at the inlet of the cabinet. So a permanent airflow through the cabinet is achieved and after the programmed amount of air has passed the cabinet the control unit enables the output contacts.

The disadvantage of this solution is the constant high usage of compressed air or protective gas.

##### 2.2.1.2 Manual mode - Pressurization

This configuration uses two nozzles and a manually operated valve. The small and the bigger nozzle are mounted in parallel and the valve is used to shut the bigger nozzle off. So for purging the valve is opened by the operator, a huge stream of air is flowing through the cabinet and purges it. After the programmed amount of air has passed the cabinet and the control unit has enabled the output contacts the operator can close the valve. So only a small stream of air is entering the cabinet through the small nozzle to maintain the required overpressure.

The advantage of this method is that after purging, the airflow is limited by the small nozzle and the use of purge medium over time is much lower than it would be without valve (see 2.2.1.1).

The disadvantage of this configuration is, that an operator is needed to open and close the valve and that an automatic start up is not possible.

## 2.2.2 F850U operation using a solenoid valve

This configuration is nearly the same as the one in section 2.2.1.2, only the manually operated valve is replaced by a solenoid valve operated by the control unit. So the change between small and big nozzle is done automatically. The advantage of this is the operator free operation of the system. After power up, the control unit will purge the cabinet, close the solenoid valve afterwards and maintain the overpressure in the cabinet through the small nozzle.

After purging, the control unit FS850U holds the pressure inside the enclosure at a minimum of 0.3 inH<sub>2</sub>O (80 Pa). Two different solenoid valve techniques are available: digital working solenoid valve (SVD) technique or proportional working solenoid valve (SVP) technique.

### 2.2.2.1 Automatic mode - Pressurization (digital solenoid valve technique)

While purging, the SVD is activated and a large amount of purge medium flows into the enclosure through a nozzle with a large cross section. After purging, the control unit turns off the SVD.

The leakage compensation is done by a bypass choke, with a very small adjustable cross section (diameter 12 mil (0.3 mm) up to 40 mil (1 mm)), inside the valve. The protective medium flowing into the enclosure is adequate to maintain a pressure of at least 0.3 inH<sub>2</sub>O (80 Pa). The pressure is monitored by the control unit FS850U by a proportional working pressure sensor. The maximum and minimum pressure of the enclosure is programmable within the configuration menu.



#### Note

If leakage losses grow up (e.g. by aging of cabinet's seals) and cannot be compensated by the bypass, the enclosure is shut down!

The FS850S works in automatic mode with time based purging method as well as with integrating purging method. These methods are illustrated in section 2.2.3.

### 2.2.2.2 Pressure control mode – Pressurization (proportional solenoid valve technique)

The internal proportional working pressure sensors also allow the use of a proportional solenoid inlet valve. This valve is used as the actuator of a digital-working FS850U PID-control loop for the inner pressure of the cabinet.

The benefits of pressure feedback control are:

1. Dramatically decreased consumption of purge gas.
2. Increased availability of the application, based on constant pressure inside Ex-p-housing; higher leakages e.g. by aging of gaskets etc. will be compensated.  
→ Adaptive compensation of leakage losses of the Ex p encapsulation!
3. Minimization of streaming noise.
4. Easy adjustment of pressure levels to specifications of Ex-certificate.

Further advantages are:

1. Exact regulation of pressure also during purging phase.
2. By defined pressure inside cabinet, pressure sensible parts like foil keyboards, windows etc. will not be damaged.

**Note**

Increased system availability by PID controlled cabinet pressure!  
Pressure sensitive parts (e.g. windows, front foils) will be saved.

### 2.2.3 Integrating versus time based purging method

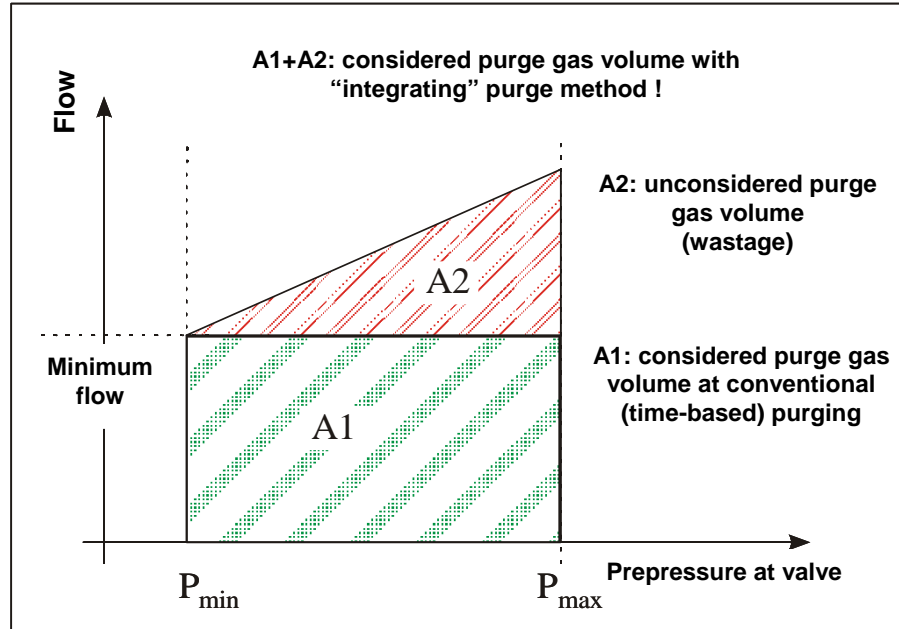
For purging in automatic mode (see section 2.2.2.1), a conventional (time based) as well as an improved integrating purging method (integration of real flow) are available:

1. Using the conventional method, the purge quantity is based on the product of a monitored minimum flow rate at the enclosure outlet and time. The flow rate depends on the size of the valve's nozzle (diameter 40 mil (1 mm) ...240 mil (6 mm)) and supply pressure. This has to be calculated using a formula or a pressure-nozzle diagram.

The conventional purging method using a digital valve has a considerable disadvantage: During purging phase and also while normal operation, a constant rate of protective gas is needed. For getting system availability the inflow rate has to be selected bigger than the leakage losses of the enclosure.

**Note**

Inflow volume – leakage losses of cabinet > preselected minimum flow rate!  
Wastage of protection gas will pollute environment and cause high costs during application's life time!



**Figure 1: Wastage of protective gas by detection of flow threshold and fixed purging time.**

2. Using the **improved integrating purging method**, the FS850U unit measures the real flow rate at the enclosure outlet and integrates the signal to get the real purged volume. Additionally, a minimum flow rate is monitored to ensure a safe purging phase. If the flow rate sinks below the minimum, the integration will be stopped and continues automatically by rising above the minimum.



**Note**

Increased inflow volume into the cabinet automatically leads to a shortening of time for purging when using the integrating purge method.  
This fast and efficient purge method enables shortest start-up times!

#### 2.2.4 Pressurization using Continuous flow

All modes above support also the operation mode „continuous flow“. This operation mode is used, for so called “containment systems”, where flammable gases or liquids will be emitted into the inner of the cabinet during normal operation (e.g. at analysers).

After the purging phase, a continuous, PID controlled flow rate will be kept during normal operation. This continuous flow rate is used for thinning flammable gases or vapours below their “lower explosion concentration”.

In Continuous flow operation mode, an adjustable minimum flow rate (additional F850U- parameter) will be monitored by purging and in normal operation.

## 2.3 Peripherals

### 2.3.1 Additional Pressure monitor DW812

#### Separate monitoring of two cabinets using an additional pressure monitor DW812

The FS850U is able to monitor two different cabinets separately and simultaneously. This application can be used e.g. at analyzers, using two different purge mediums. The first enclosure is monitored by the FS850U itself, the second enclosure is monitored by the pressure monitor DW812, connected to the separate inputs of the FS850U.

The pressure monitor will be installed, like a control unit, as a purge medium drain on the second cabinet. For this, the DW812 has to be connected to the intrinsically safe plug connector 2 of the control unit FS850U (see chapter 3.4.1) and has to be initialized into its configuration menu. See the schematics in Figure 2.

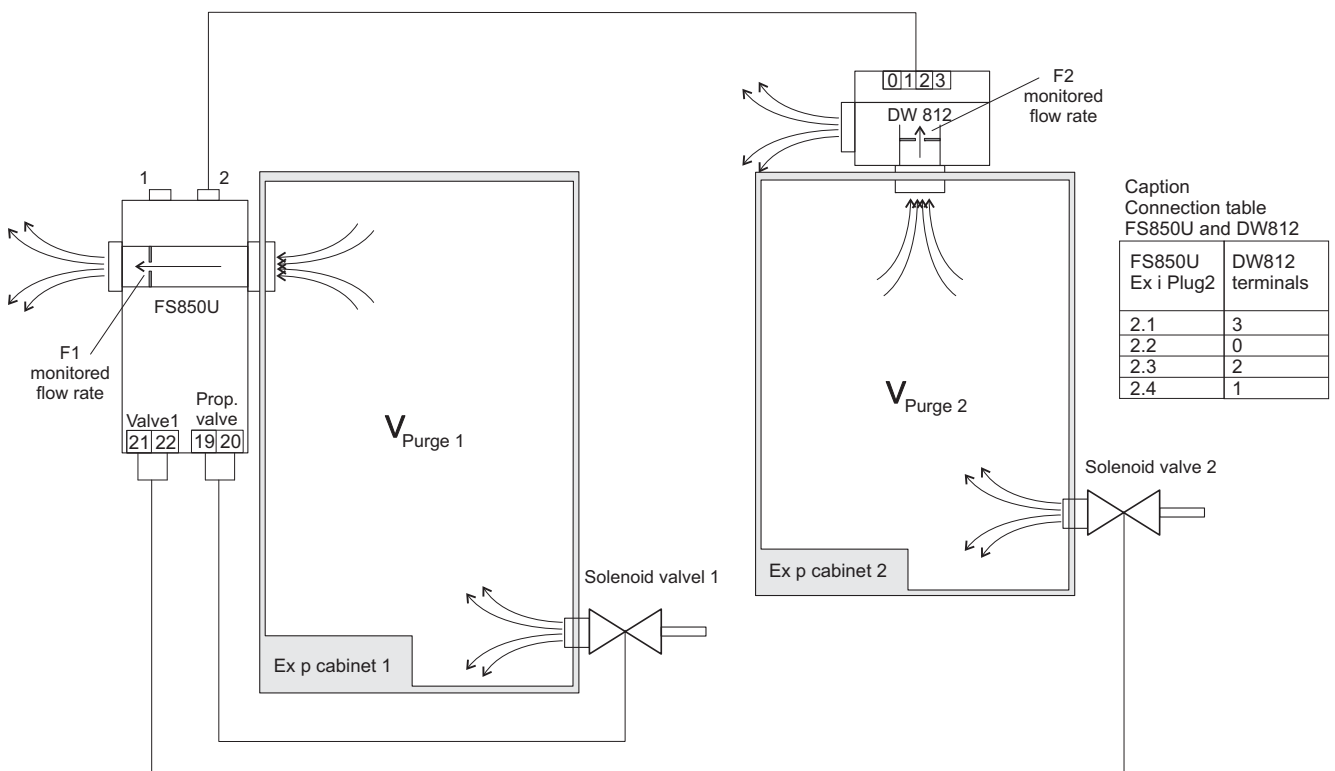


Figure 2 Monitoring of two Ex p cabinets

The purging time respectively purging volume of both enclosures can be calculated and entered separately. By reason of principle, the **integrating purging method as well as the PID-controlled cabinet pressure cannot be used** at the cabinet monitored by the DW812.

### 2.3.2 Operator panel BT851

For the control unit FS850U an optional operator panel for remote control and visualization is available. The panel is based on the explosion protection class 'intrinsically safety' and offers an improved operator access when the FS850U control unit is mounted inside the cabinet.

The operator panel BT851 indicates operation and malfunction status as plain text via LC-display. Four front-sided push-buttons offer total command of the FS850U unit. Status, momentary pressure, flow rate as well as remaining purge volume/time are available. The connection to the control unit is based on serial communication, using only 3 wires (max. distance 20m).

### **3 Installing the unit/ Getting started**

This chapter contains important steps for mounting, connecting and starting.

#### **3.1 Classification**

The UL has classified the FS850U for use in Class I, Division I, Groups BCD and it is a Type X system through NFPA 496

#### **3.2 General requirements according to NFPA 496**

##### **3.2.1 Enclosure**

The protected enclosure, including windows, shall be constructed of material that is not likely to be damaged under the conditions to which it may be subjected.

Precautions shall be taken to protect the enclosure from excessive pressure of the protective gas supply.

In Division I and Zone I locations, where the conduit or raceway entry into a pressurized enclosure is not pressurized as part of the protective system, an explosion-proof conduit seal shall be installed as close as practicable to, but not more than 450mm (18 in.) from, the pressurized enclosure.

##### **3.2.2 Protective gas system**

The protective gas shall be essentially free of contaminants or foreign matter and shall contain no more than trace amounts of flammable vapour or gas.

All protective gas supplies shall be designed to minimize changes for contamination.

Air of normal instrument air quality, nitrogen, or other non-flammable gas shall be permitted as a protective gas.

Piping for the protective gas shall be protected against mechanical damage.

Where compressed air is used, compressor intake shall be located in an unclassified location.

Where the compressor intake line passes through a classified location, it shall be constructed of non-combustible material, designed to prevent leakage of flammable gases, vapors, or dusts into the protective gas, and protected against mechanical damage and corrosion.

The electrical power for the protective gas supply (Blower, compressor, etc.) shall be supplied either from a separated power source or from the protected enclosure power supply before any service disconnectors to the protected enclosure.

Where "double pressurization" is used, the protective gas supplies shall be independent.

##### **3.2.3 Power equipment**

Enclosures containing power equipment shall be substantially non-combustible construction and shall be reasonably tight, Gaskets shall be permitted.

##### **3.2.4 Type X Pressurizing**

No valves shall be permitted between the cutoff switch and the protected enclosure.

Equipment, such as motors or transformers, that may be overloaded shall be provided with devices to detect any increase in temperature of the equipment beyond its design limits and shall de-energize the equipment automatically.

For ventilated equipment, the flow of protective gas shall provide sufficient cooling even during overload conditions, or the equipment subject to overloading shall be provided with devices to de-

tect any increase in temperature beyond its design limits and to de-energize that equipment automatically.

### 3.3 Mounting

#### 3.3.1 Control unit FS850U

The control unit FS850U can be placed directly inside hazardous area. The location (inside or outside the enclosure) as well as the position is variable and can be fitted to customers specific requirements. If possible, arrange the in- and outlet of the control unit on a horizontal axis. See also Figure 15 in the Appendix.

The control unit can be fitted to the cabinet or to a mounting plate using the 4 integrated, rear sided fixing points. In most applications, the FS850U is fixed using the 1 inch screw connection of inlet or outlet.



#### Note

**The solenoid inlet valve(s) (or inlet nozzle) should be mounted as far away from the control unit FS850U as possible, to achieve safe purging! (E.g. diagonal arrangement, see Figure 15).**



#### Caution

**Watch local safety guidelines and NEC 500-516!**

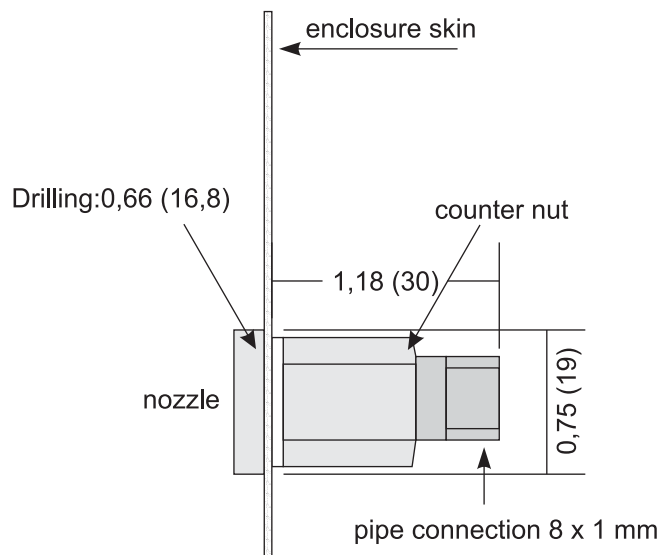
**For Class I Groups B, C & D Conduit Seals are required within 18".**

**If the FS850U is mounted inside the enclosure this conduit seals are also required.**

#### 3.3.2 Operation only with nozzle, without solenoid valve

The inlet nozzle has to be mounted into a drilling into the pressurized housing using a counter nut with a protective gas supply adapter.

It is not allowed to mount the nozzle on a bushing inside the pressurized enclosure.



**Figure 3 Mounting the nozzle into the housing. [inch (mm)]**

Please see table in section 6.1.2 to choose the adapted nozzle diameter to your system.

### 3.3.3 Solenoid valves

Mounting position of solenoid valve is free. It can be mounted inside or outside the cabinet. For mounting hints, see additional manufacturer's guide of solenoid valve.



#### Note

**The solenoid valve is not part of the UL Classification.**

### 3.3.4 Operator panel BT851

The operator panel BT851.0 can be integrated directly into the enclosures outer skin. The BT851.5 has a separate housing for mounting on a plate or wall. For location and drill sizes see Figure 16: Dimensions and templates of BT851 in annex.

### 3.3.5 Protective gas supply

The customer has to supply restricted (or regulated) pre- pressure to the inlet nozzle.

Please see table in section 6.1.2 to choose the adapted nozzle diameter, pre-pressure to your system.

### 3.4 Connecting and Commissioning

After mounting the FS850U, connect the power supply lines, the valve lines and other non-intrinsically safe lines to the terminals 11-24 into the explosion proof enclosure of the control unit FS850U.



**Warning**

#### HIGH VOLTAGE!

**Beware of high voltages and currents when handling this device or power lines!**

**Electric shocks can injure or kill!**



**Caution**

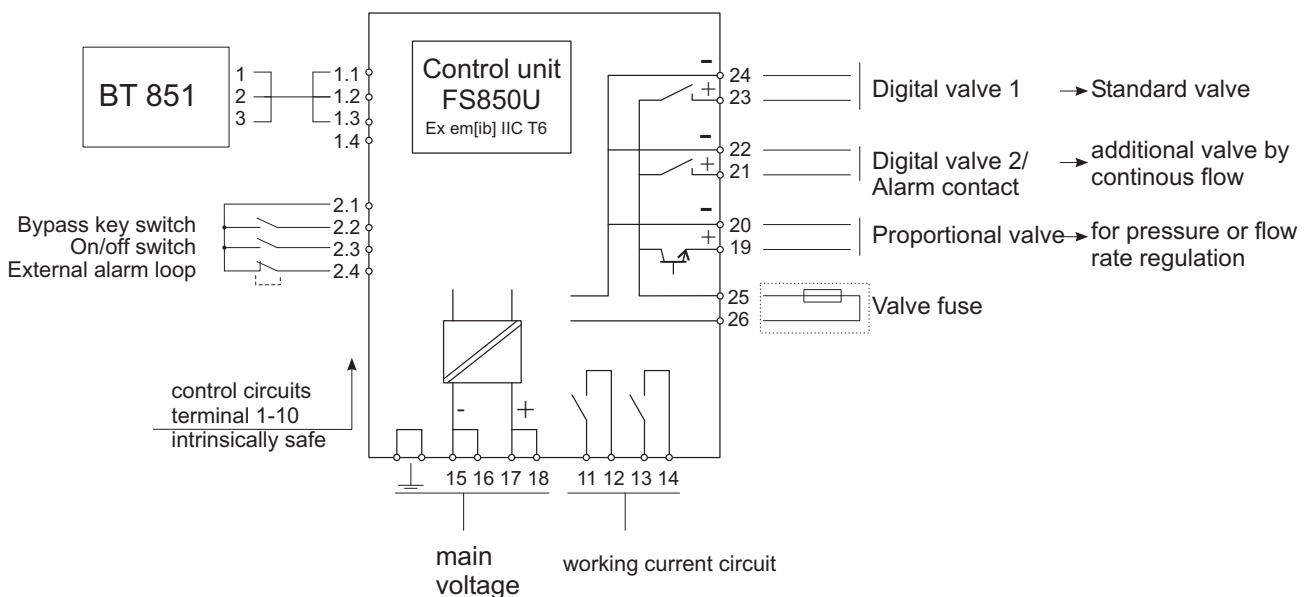
**Ensure your installation is compliant to the following: NEC 500-516, certification and description documents of FS850U.**

**Do not exceed terminal safety limits of each terminal. See limits in technical details or declarations of conformity.**



**Caution**

**FOR CLASS I GROUPS B, C & D CONDUIT SEALS ARE REQUIRED WITHIN 18”.**



**Figure 4: Block diagram FS850U**



**Note**

If an external key switch is used for enabling the bypass function, it can be helpful to set the bypass code at the FS850U to 9999 to prevent a secondary bypass function by bypass code from the control unit.

The external key switch for the bypass function has to be connected to terminals 2.1 and 2.2 of the FS850U.



It is possible to switch on and off the internal devices of the cabinet using the On/Off key at the FS850U control unit or at the BT851 operator panel. If this function should not be used, it is possible to short cut terminals 2.1 and 2.3 of the FS850U, to enable an automatic power on after purging phase.

In this case, the On/Off-buttons at the control unit FS850U and BT851 are disabled.

### Intrinsically safe connectors of FS850U

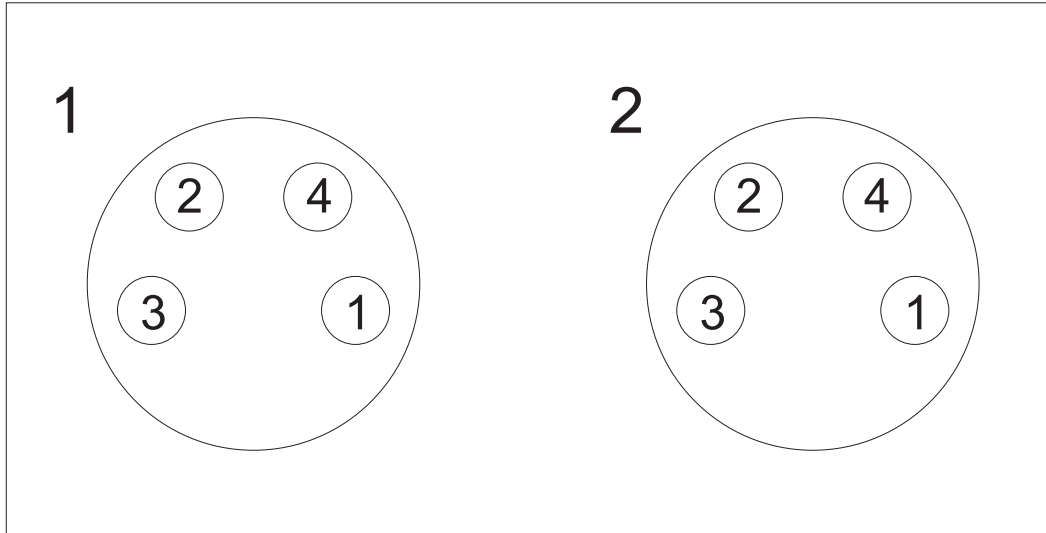


Figure 5: Intrinsically safe connectors of FS850U (socket on FS850U)

Connector		Description
FS850U	BT 851	
1.1	1	Terminals exclusively for connecting the operating panel BT 851
1.2	2	
1.3	3	
1.4		
2.1		(+) signal for all Inputs below
2.2		Input for external bypass key switch
2.3		Input for external On/Off switch
2.4		Input for external alarm loop

### 3.4.2 Connection table FS850U and DW812

To achieve separate monitoring of two cabinets using an additional pressure monitor DW812.

Intrinsically safe connector 2 on FS850U	Terminals on DW812
2.1	3
2.2	0
2.3	2
2.4	1

### 3.4.3 Power terminals of FS850U

Terminal FS850U	Description
11,12	Working current circuit 1
13,14	Working current circuit 2
15,16	Line voltage, neutral conductor
17,18	Line voltage, outer conductor at AC
19,20 +,-	Terminals for proportional solenoid valve
21,22 +,-	Terminals for additional digital solenoid valve 2
23,24 +,-	Terminals for digital solenoid valve 1

### 3.5 Default parameters

The following parameters are preset after connecting the FS850U to mains supply for the first time or after a reset of the control unit:

	Parameter	Display	Comment
Language	English		
Structure	Mode: leakage compensation Type of valve: proportional External DW812: No		
Pressure and flow	Purging volume Min. flow while purging Min. pressure inside enclosure Max. pressure inside enclosure Set-point pressure while purging Set-point pressure while operating Signal pressure	000500 l 00.9 l/s 0.3 inH2O 6 inH2O 4 inH2O 0.8 inH2O 0.3 inH2O	Shut down value for integration Shut down values (limits) for pressure inside housing  Only at optional signalling contact
Codes	Main menu (M-Code) Bypass (By-Code) On/Off-Code (On/Off-C.)	0001 0002 0000	The setting 0000 disables the code protection (not possible at M-Code) The setting 9999 disables bypass button at FS850U and BT851

#### 3.5.1 Reset



Hold red button **ENTER-Button** down, while powering on the FS850U to reset all parameters to default values in table 3.5.

**Note**

**The Reset can not be made using the BT851!**



### 3.6 Automatic Purging process

The control unit FS850U starts the purging process immediately after start up, if the minimum pressure of 0.3 inH<sub>2</sub>O (80 Pa) can be built up inside Ex p cabinet.

Minimum pressure and minimum flow rate will be monitored simultaneously to ensure a safe purging process.

If the purging flow rate drops below its minimum (e.g. temporary interrupt of air supply or temporary shut of the outlet), the purging process will be interrupted and the control unit continues purging, after the disturbance is removed. If purging pressure exceeds the min or max limits, the purging process will be terminated and the control unit will restart with a new purging process automatically after achieving purging conditions.

The table below shows the minimum flow rate in accordance of the used orifice plate.

Orifice plate in control unit	Monitored minimum flow rate
Ø = 0.16 inch (4 mm)	0,1 liters /sec.
Ø = 0.24 inch (6 mm)	0,2 liters /sec.
Ø = 0.39 inch (10 mm)	0,4 liters /sec.
Ø = 0.55 inch (14 mm)	0,9 liters /sec.
Ø = 0.71 inch (18 mm)	1,3 liters /sec.

### 3.7 Maintenance

Depending on the cleanness of the used purging gas, the pneumatic inlet and outlet parts of the FS850U as well as the solenoid valve and optional DW812 have to be checked regularly for pollution by e.g. oil, dust, etc. or corrosion to ensure a safe work of the application.

### 3.8 Repairs



**Warning**

**Repairs or maintenance at the FS850U or its peripheral parts may only be done by Gönzheimer Elektronik GmbH.**

## 4 Operation






The user can interact with the FS850U purge control unit via the four front sided push buttons and LC- display respectively by using the external operator panel BT851.

### 4.1 Display

The built-in display indicates menus, operation modes, present pressure or flow rate data, as well as malfunction.

### 4.2 Keyboard

The four front sided keys have different functions depending on the present mode of operation.

Key	Mode	Function
<b>On/Off</b>  „Shift right“- button	normal operation  running menu	Toggles the cabinet's electronic devices on and off, if purging system state is ready  Shift cursor one position to right.
<b>BYPASS</b>  „Up“-button	normal operation   <b>Warning</b>  running menu	Activates Bypass.  <b>Only for maintenance of the cabinet! Only allowed if no hazardous atmosphere is present!</b>  Get menu next item
<b>INFO /P/Q/T</b>  „Down“-button	normal operation  running menu	Changes information shown on the display: present pressure, flow rate, remaining purge time respectively purge volume and present state of the purging system.  Get previous menu item
<b>MENU</b>  „Enter“-button	normal operation  running menu	Enter or leave menu  Initiates and confirms parameter input

### 4.3 How to enter and leave the bypass mode



**Warning**

**Only for maintenance of the cabinet!**

**Set bypass only if no hazardous atmosphere is present inside or around the cabinet!**

**The bypass mode is denied, if it is possible that an explosive atmosphere can arise inside the Ex p- cabinet! (e.g. at containments systems)**

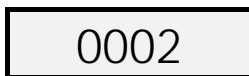


It is possible to enter bypass mode in each operation state of the control unit. The origin state is normal operation.

Press „Up“-button



Enter the bypass code using the “up”, “down” and “shift right” button.



The ex works bypass code is ‘0002’.



Confirm the right bypass code using the *ENTER*- key.



**The bypass mode is now active.**

Or



If the control unit is set to “automatic on” the display toggles between “bypass” and “On” and the relay contacts (Terminals 11,12 and 13,14) are closed.

Leaving of bypass mode is done by the same procedure.

Alternative to the use of the push buttons, the bypass mode can be called by using a key switch between intrinsically safe connector 2.1 and 2.2

## 4.4 Information during normal operation

The FS850U can give several information to the user during different states of operation via the LC-display.

You can choose between the following information items: state, current pressure-, flow rate-, or remaining purge time- indication using the "down/INFO"- button (see figure below).

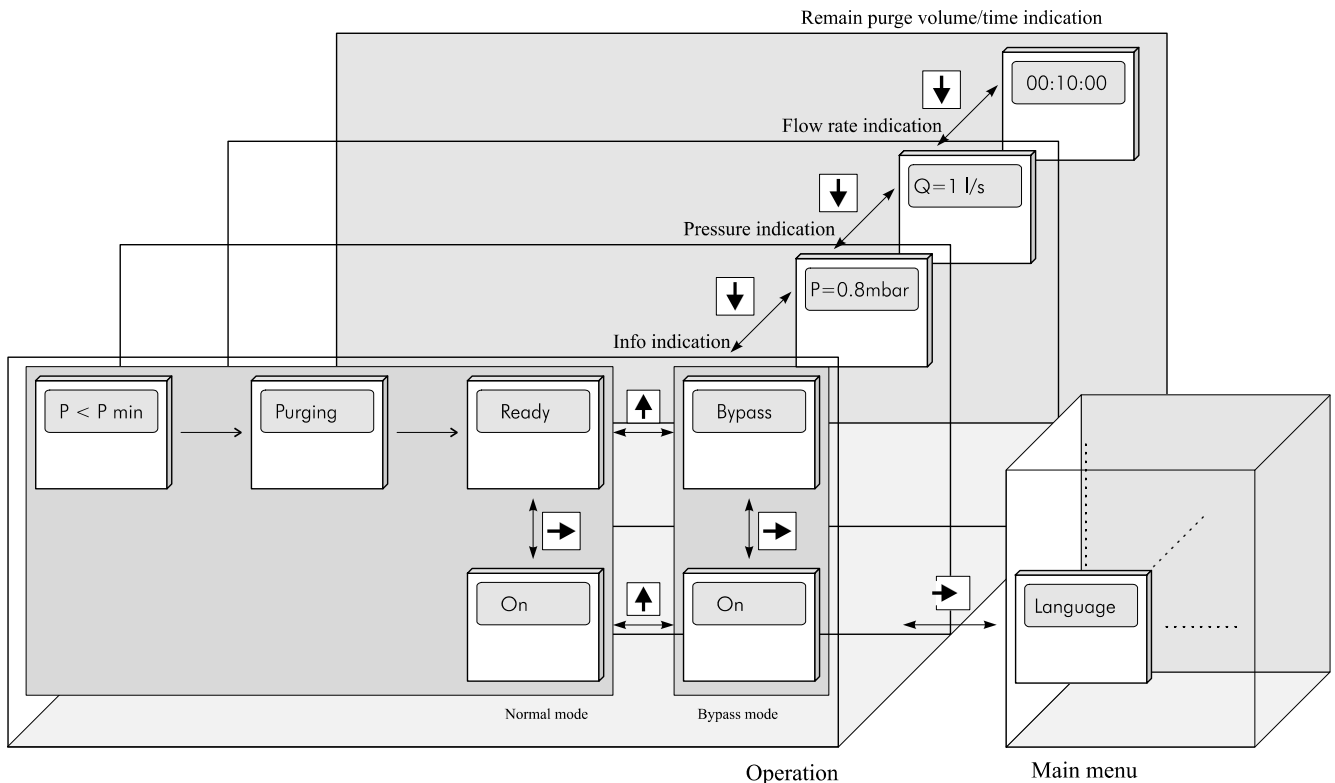


Figure 6 Flow chart: states of purging system and corresponding display

## 4.5 Configuration

To achieve an application specific mode of operation, the control unit FS850U has to be configured, entering the following parameters. All parameters of the control unit are structured in form of a menu. See also the flow charts in chapter 5.

### 4.5.1 The menu structure

**Main menu** The main menu is separated into 4 categories:

- Language
- Structure
- Parameters
- Codes

**Language** The standard device contains the following languages:

- German
- English
- French
- Dutch
- Spanish

**Structure** The purge system structure can be selected as follows:

- Operation mode: *leakage compensation* or *continuous flow*
- Valve type: *digital* or *proportional* solenoid valve
- Purge method: *Integrating* or *time based*
- Optional pressure monitor DW812 installed: *Yes* or *No*

**Parameters** This category contains the necessary parameters depending on the defined structure above. Examples for parameters are:

- Purging volume/time
- Minimum flow while purging process
- Minimum pressure
- Maximum pressure
- Signal pressure

**Codes** The control unit has 3 different code words:

- M-Code: to enter main menu
- By-Code: to activate Bypass
- E/A-Code: to switch encapsulated components on or off



**Note**

**The FS850U enters stand by mode while running menu structure. That means: the solenoid valve is closed and the encapsulated components are switched off.**

**4.5.2 Description of the menu items**

The display of the control unit contains 8 digits. All names of structures and parameters will be shown in clear text or abbreviations.

The table below shows some explanation of the menu items. The table can be used as a reference guide for programming the FS850U correctly.

See also corresponding flow charts in section 5.

Hierarchy			Description, Explanation
1.Level	2.Level	3.Level	
Structure	Valves	P-Valve	Selecting 'valves' specifies whether a <b>proportional solenoid valve</b> or a <b>digital solenoid valve</b> is connected.
		D-Valve	
	DW Ext.	DW Ext. Y.	Integrates an additional pressure monitor DW812 to the purging system. ( <b>DW 812, Yes</b> )
		DW Ext.N.	<b>DW 812, No</b> No additional pressure monitor is used.
	Integra.	Integ. Y	<b>Integrating purging method, Yes</b> Chooses integrating purging method.
		Integ. N.	<b>Integration Purging method, No</b> Selects time based purging method.
	Cont.Flow	C. Flow Y.	<b>Continuous Flow, Yes</b> Activates the operation mode 'continuous flow'.
		C. Flow N.	<b>Continuous Flow, No</b> Activates the operation mode 'leakage compensation'.
Param.	Pur. Time	.....	<b>Purge time</b> - Enter a fixed purge time in h/min/sec. (The purge time only appears, if the time based

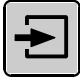

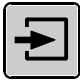
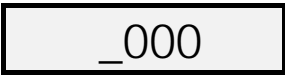


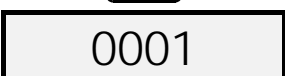

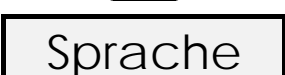




	Pur. Vol.	.....	purging method is chosen) <b>Purge volume</b> – Enter a fixed volume in litres. (The purge volume only appears, if integration purging method is chosen; e.g. 5 x cabinet volume)
	Min.Fl. P.	.....	<b>Minimum flow rate during purging phase</b>
	Min.Fl .O.	.....	<b>Minimum flow rate during normal operation (only at continuous flow)</b>
	Rated Fl.	.....	<b>Flow rate set-point</b> - At operation mode 'continuous flow' this flow rate will be regulated, while normal operation.
	Min.Pres.	.....	<b>Minimum pressure inside enclosure</b> Only values above $\geq 0.3$ inH <sub>2</sub> O can be entered.
	Max.Pres.	.....	<b>Maximum pressure inside enclosure</b> Maximum pressure $\leq 11$ inch H <sub>2</sub> O
	R. Pre. Pu.	.....	<b>Pressure set-point during purging,</b> This pressure value will be regulated during purging process.
	Rated Pr.	.....	<b>Pressure set-point during normal operation,</b> This pressure value will be regulated during normal operation.
	Sig. press.	.....	<b>Pressure set-point</b> , at under-run of this value, the signalling output relay opens (terminals 21,22).
Codes	M-Code	.....	<b>Menu code</b> - Code to enter menu and leaving normal operation mode. The M-code could not switched of by setting M-Code = „0000“!
	By-Code	.....	<b>Bypass code</b> - Code to activate the bypass. The bypass code can be switched off by setting „0000“. The bypass code „9999“ blocks the bypass function. In that case a bypass can only be activated by key switch connected to intrinsically safe connectors 2.1 and 2.2.
	On/Off-C.	.....	<b>On/ Off code</b> , enables switching on or off the encapsulated devices. The On/Off code word can be switched off, entering „0000“.

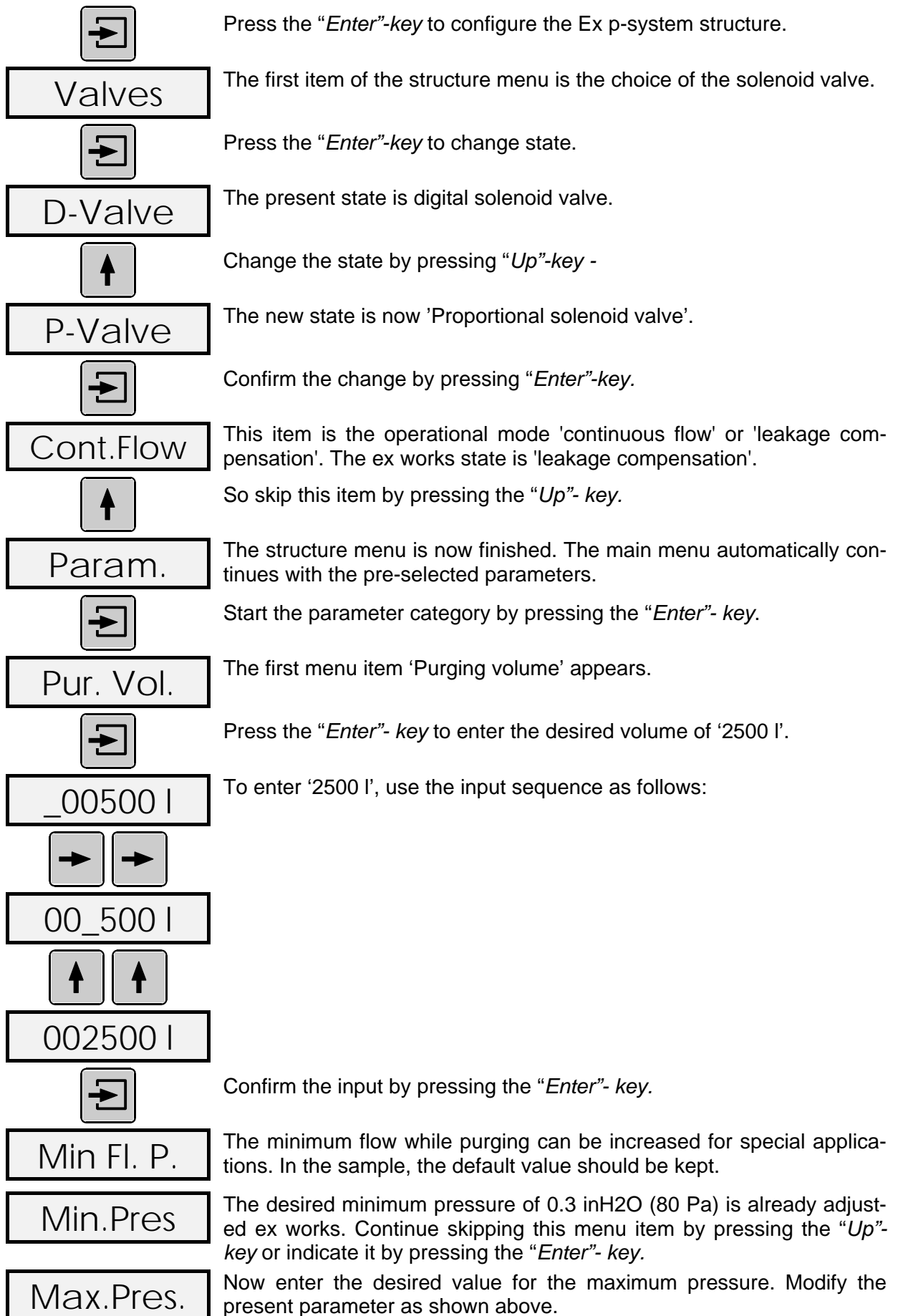
### 4.5.3 Configuration Example

#### Example- Ex p-System


- ⇒ Enclosure volume: 500 l
- ⇒ Language : English
- ⇒ Structure :
  - Operation mode: leakage compensation
  - Proportional solenoid valve
- ⇒ Parameters
  - Purging volume: 2500 l
  - Minimum pressure of enclosure: 0.3 inH<sub>2</sub>O (80 Pa)
  - Maximum pressure of enclosure: 6 inH<sub>2</sub>O (1500 Pa)
  - Set-point pressure purging process: 4 inH<sub>2</sub>O (1000 Pa)
  - Set-point pressure normal operation: 0.8 inH<sub>2</sub>O (200 Pa)
- ⇒ Codes
  - M- Code: 0001
  - By-Code: 0002
  - E/A-Code: 0000 (switched off)

#### Procedure:

	Press the “Enter”-button to start main menu. The control unit calls for the M-code to be entered.
	The ex works M-code is ‘0001’.
	Press the “Enter”-button to enter M-Code.
	Display shows ‘0000’, the far left digit is flashing.
	Use right key to step between the digits.
	to enter code ‘0001’,
	(the present M-Code).
	Confirm the code input by pressing “Enter”-button
	The main menu is active now. The first sub menu ‘Language’ appears on the display. The default language of ex works is German.
	To alter the language, press “Enter”.
	On the left appears the word ‘English
	Press the “Enter”-key to confirm.
	Category ‘Structure’ appears.





4 inH2O	The desired maximum pressure is 4 inH2O (1000 Pa)
R. Pre. Pu	The desired set-point pressure during purging process of 4 inH2O is already adjusted ex works. Continue passing this menu item by pressing the "Up"- key.
Rated Pre.	The desired set-point pressure during normal operation must be adjusted. Modify the present parameter to 0.8 inH2O (200 Pa) as shown above.
Codes	The parameter setting is completed now. The main menu continuous automatically with the sub menu codes.
M-Code	Modify M-Code to '0001' as shown above. Please note: the <b>M-Code cannot be set to '0000'</b> .
By-Code	Modify bypass code to '0002' as shown above.
On/Off-C.	Set the on/off code to switch the encapsulated devices on or off to '0000'. This code is disabled from now on.
End	The main menu settings are now completed.
	After pressing the <i>Enter</i> - key, the purging system is ready for operation.

#### 4.6 Alarm and malfunction indications

<i>Alarm</i>	<i>Cause</i>	<i>Actions</i>
Ext.Alar	The external alarm occurred, i.e. the external alarm loop is broken or activated by an additional safety device.	(If the external alarm loop is not used, disable the external alarm loop by a shorting bridge)

<i>Error message</i>	<i>Cause</i>	<i>Remedy</i>
Error E.	EEPROM Read Error Stored configuration data is incomplete or corrupt.	Restart the FS850U. If the error remains, the unit has to be checked by manufacturer.

### 5 Flow charts

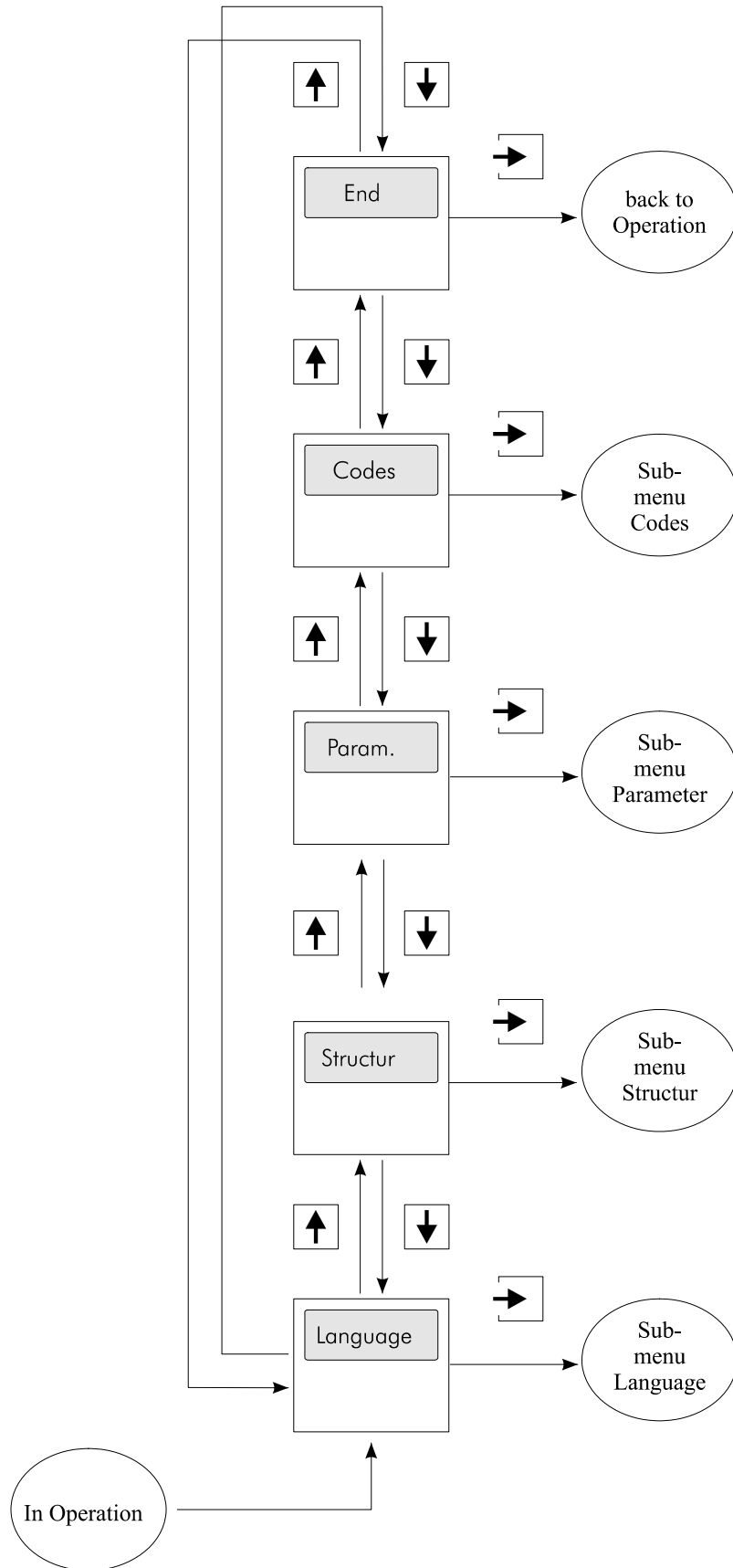


Figure 7 Flow chart: main menu

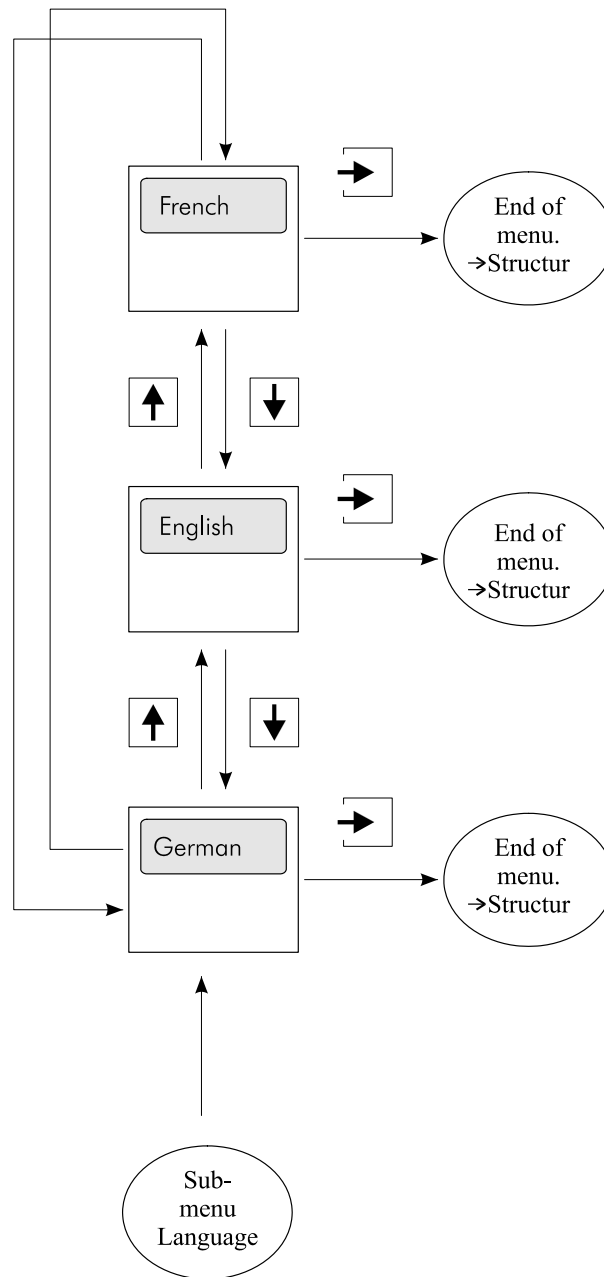


Figure 8 Flow chart: language menu

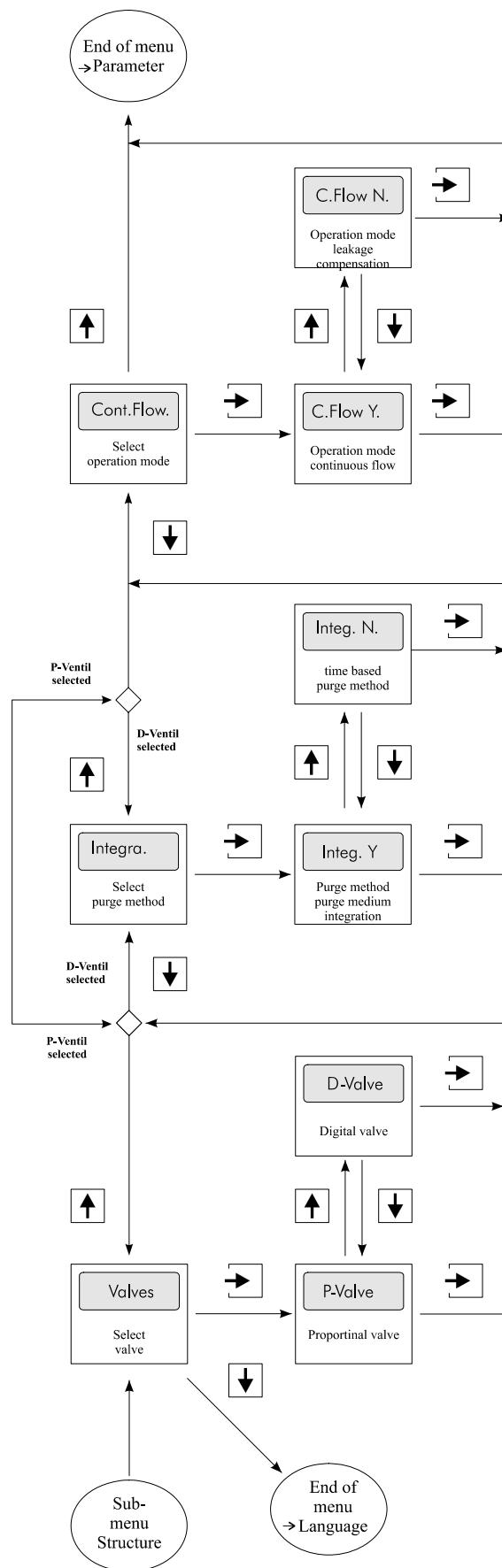


Figure 9 Flow chart: structure category

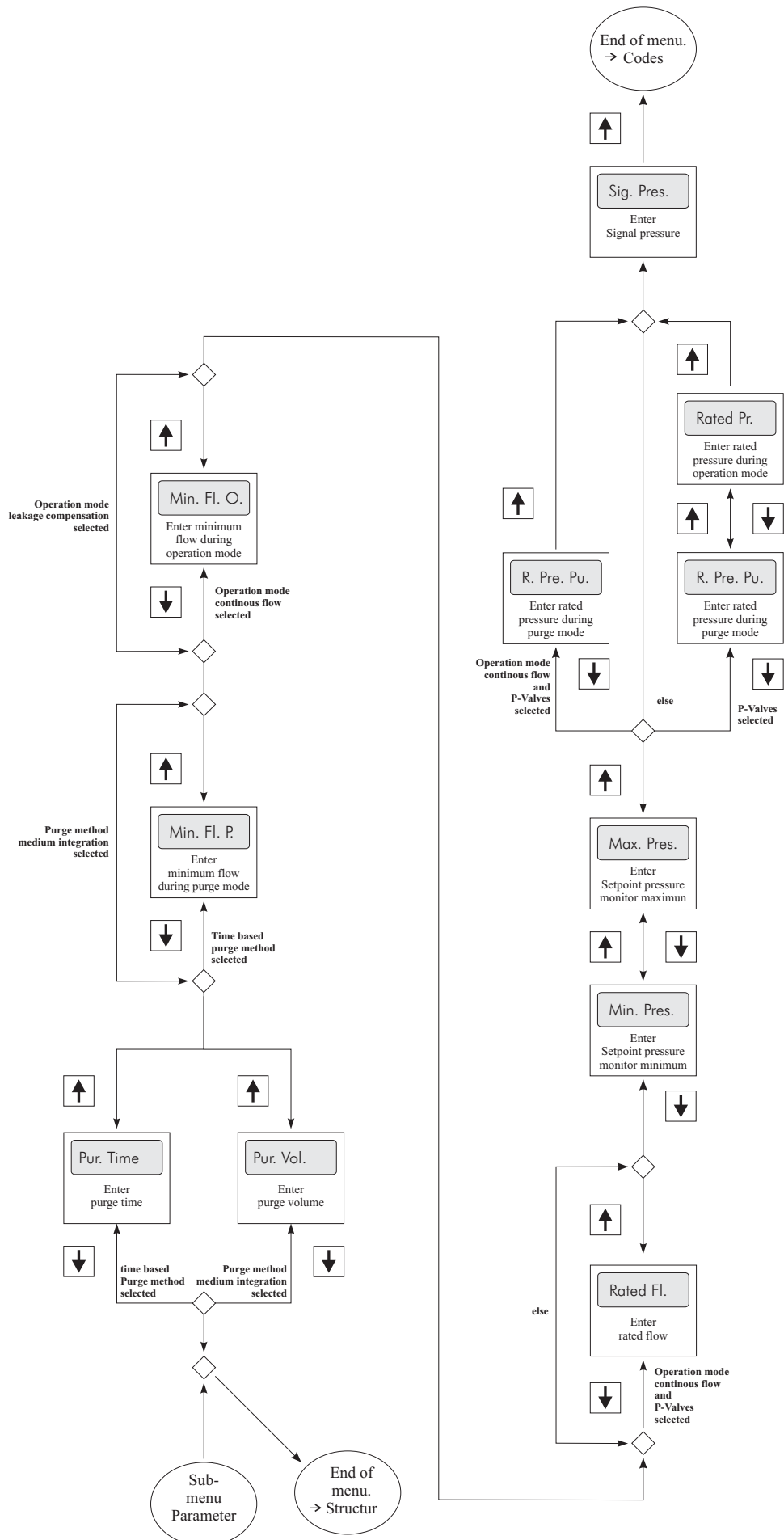


Figure 10 Flow chart: parameter category

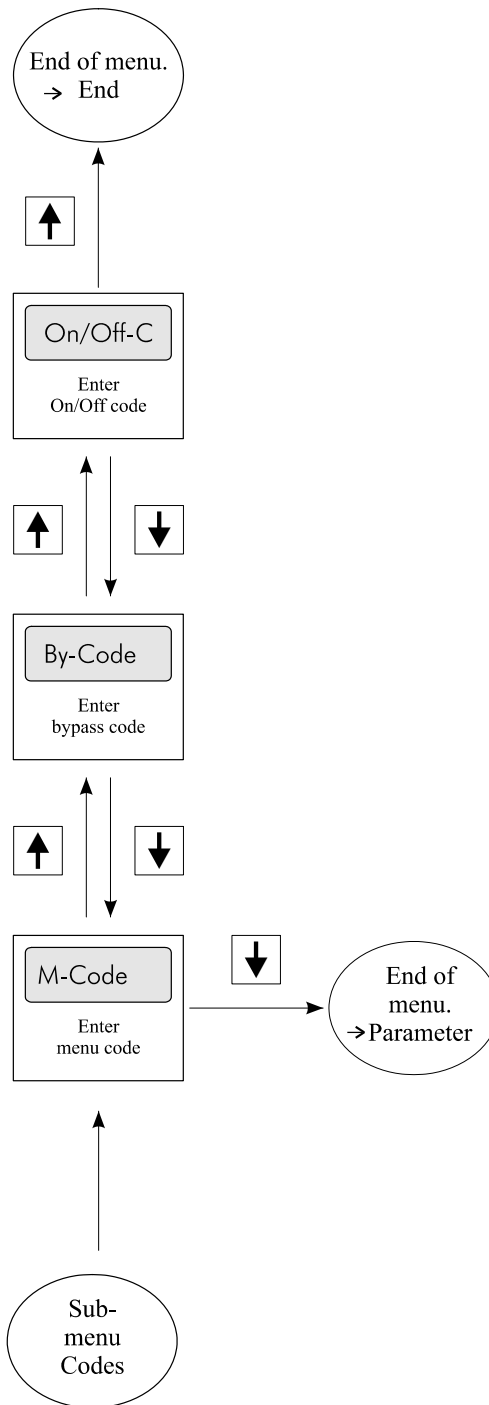


Figure 11 Flow chart: code category

## 6 Annex

### 6.1 Tables

#### 6.1.1 Size of orifice plate

Orifice plate	Flow rate is about
Ø = 0.16 inch (4 mm)	0.14 .. 0.31 liters /sec.
Ø = 0.24 inch (6 mm)	0.31 .. 0.75 liters /sec.
Ø = 0.39 inch (10 mm)	0.69 .. 1.81 liters /sec.
Ø = 0.55 inch (14 mm)	1.67 .. 3.06 liters /sec.
Ø = 0.71 inch (18 mm)	2.5 .. 4.12 liters /sec.

The right diameter of the orifice plate depends on the desired flow rate through the enclosure. In case of digital solenoid valve, the flow rate is mainly given by the built in nozzle diameter and pre pressure.

#### 6.1.2 Table: Resulting Flow rates by Nozzle and pre pressure

The air flow into the housing is a function of the pre pressure and the diameter of the nozzle. The table below shows the resulting air flow by given pre pressure and nozzle diameter.

pre pressure [bar] [100000Pa]	pre pressure [inH2O]	Flow in [l/s]    ρ Air = 1,293 g/liter			
		Nozzle diameter [mm]			
		1,5	2	3	4
1,5	602,2	0,7	1,2	2,7	4,9
2	802,9	0,8	1,5	3,4	
2,5	1003,7	1,0	1,7	3,9	
3	1204,4	1,1	1,9	4,4	
3,5	1405,1	1,2	2,1		
4	1605,9	1,3	2,3		
5	2007,4	1,5	2,6		

#### 6.1.3 Table: Plate orifice Selection

Dependent on the air flow in the table 6.1.2 above it is recommended, to use a minimum size of the orifice plate. The table 6.1.3 is similar to table 6.1.1. The customer can choose the plate orifice in correspondence to given pre pressure and nozzle diameter.

pre pressure [bar] [100000Pa]	pre pressure [inH2O]	Plate orifice [mm]			
		Nozzle diameter [mm]			
		1,5	2	3	4
1,5	602,2	min. 6	min. 10	min. 14	min. 18
2	802,9	min. 6	min. 10	min. 14	
2,5	1003,7	min. 10	min. 10	min. 18	
3	1204,4	min. 10	min. 14	min. 18	
3,5	1405,1	min. 10	min. 14		
4	1605,9	min. 10	min. 14		
5	2007,4	min. 10	min. 14		

## 6.2 Technical Details

		Control unit FS850U
General	Mounting	inside hazardous area
	Ex protection class	Explosion proof with I.S. Outputs, Class I, Division 1, Groups B, C, D, T6, Purged Type X
	Environment protection	NEMA 4X / IP65
Housing	Dimensions	H x W x D: 10.51 inch x 5.24 inch x 4.33 inch 267 mm x 133 mm x 110 mm
	Material	Aluminum, lacquered, light grey (RAL 7035)
Electrical specifications	Power consumption	About 2.5 VA (without peripherals)
	Main voltage	110V AC, 120V AC, 230V AC 48 ... 62 Hz
	Working circuits Terminal 11, 12, 13, 14	AC: $U \leq 250\text{VAC}$ , $I \leq 16\text{A}$ at $\cos \varphi > 0,7$ DC: $U \leq 30\text{VDC}$ , $I \leq 7\text{A}$ , $P \leq 150\text{W}$
	Control circuits, Plugs for peripheral components	Ex protection class: intrinsically safe, see declaration of conformity in UL certificate for further details
Pneumatic	Pressure range	0 ... 7 inH <sub>2</sub> O (0 .. 1744 Pa)
	Flow rate range	0.14 .. 4.17 l/s, dependent upon orifice plate size
Mounting	Position	Position independent, only intake and outlet of the control unit should be lined up on a horizontal axis.
	Environment temperature	-10°C ...+50°C at T6 -10°C ...+60°C at T4
	Humidity	5-95%, non-condensing
Ex p Configuration	Parameter input	LC-Display, menu guided Different languages : German, English, French, Dutch, Spanish
	Parameter storage	by EEPROM double saved with CRC

## 6.3 Intrinsically safe ports

Intrinsically safe inputs and outputs					
Terminal	Voltage $U_0$	Current $I_0$	Power $P_0$	$C_0, L_0$	Comment
1.1	8.61V	51mA	108.4mW	100nF, 40μH	Supply BT851
1.2	8.61V	51mA	108.4mW	100nF, 40μH	Data BT851
1.3					Gnd BT851
2.1					Power supply
2.2	8.61V	1.93mA	4.16mW	0nF, 40μH	Bypass-Input, Ext Q > min
2.3	8.61V	1.93mA	4.16mW	0nF, 40μH	On/Off-Input, Ext P > min
2.4	8.61V	1.93mA	4.16mW	0nF, 40μH	External alarm input, Ext P > max

Table 2: Intrinsically safe ports



### 6.4 Block diagrams

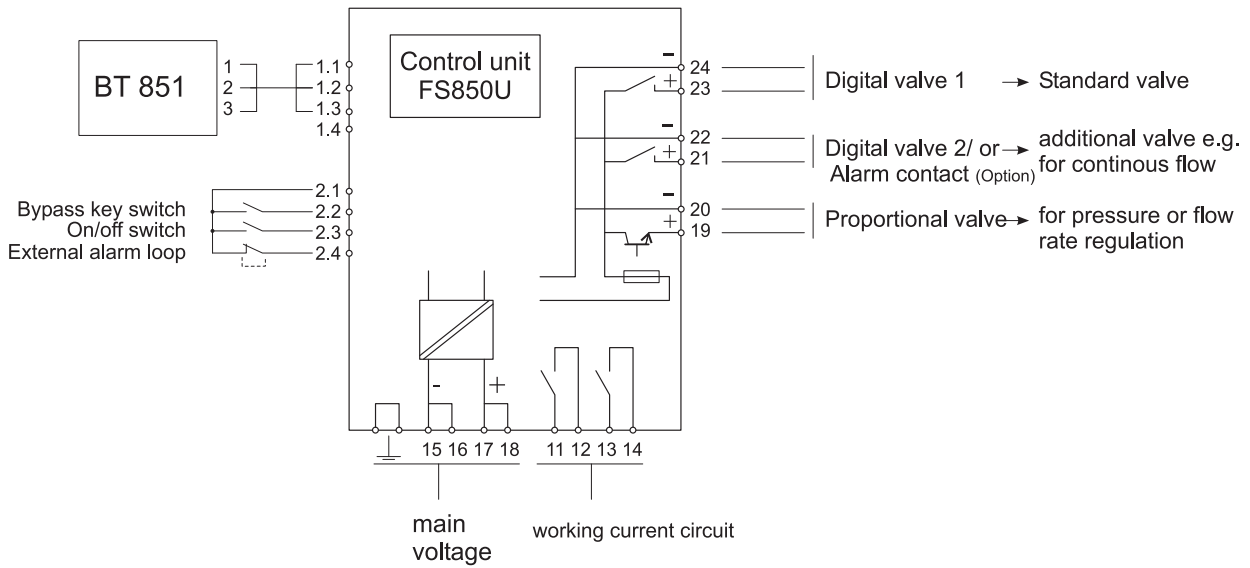


Figure 12 Electrical block diagram

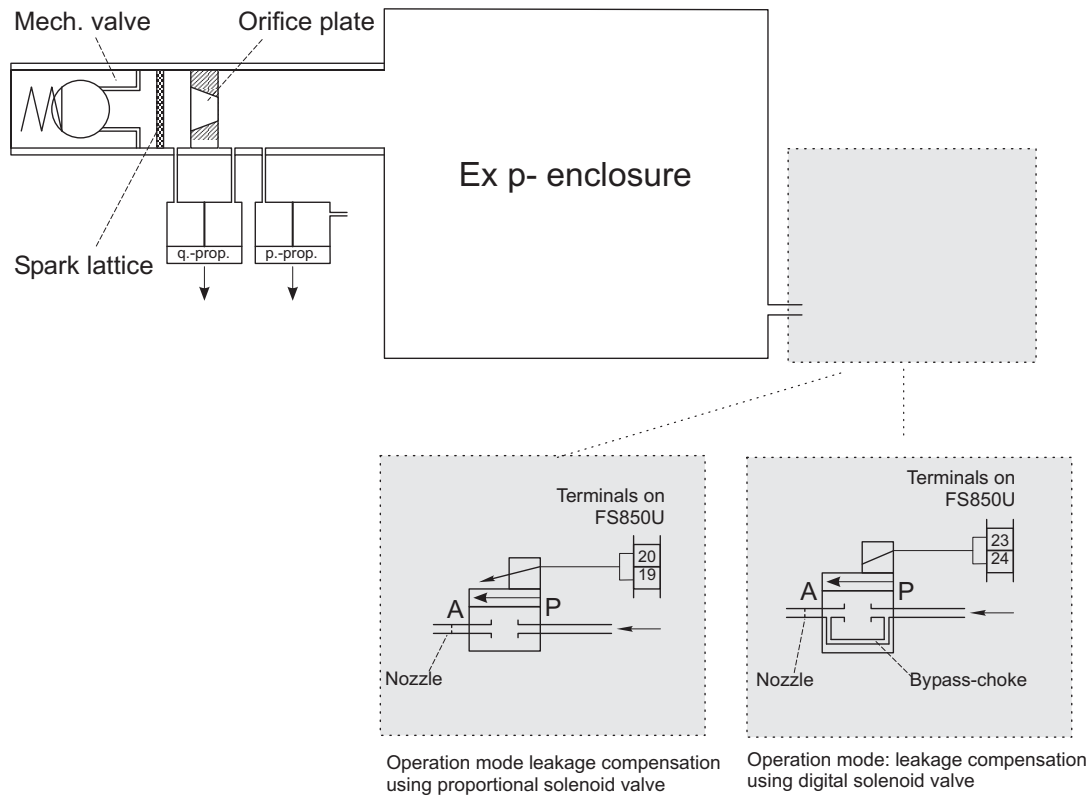


Figure 13 Pneumatic block diagram Dimensions

### 6.5 Dimensions

Units: inch (mm)

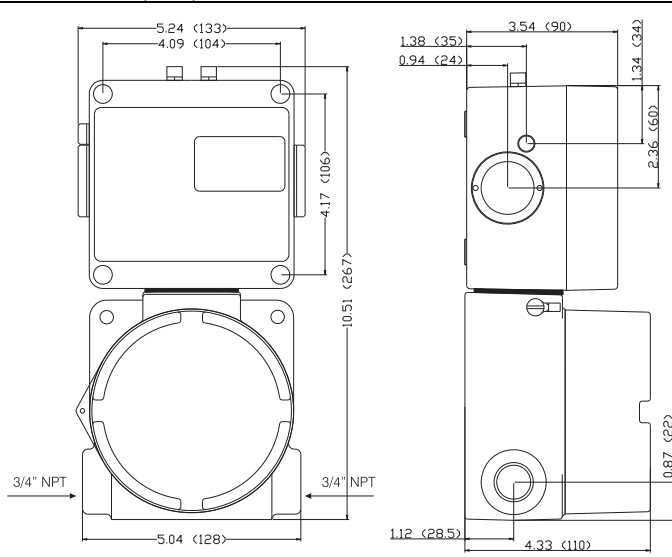


Figure 14: Dimensions FS850U

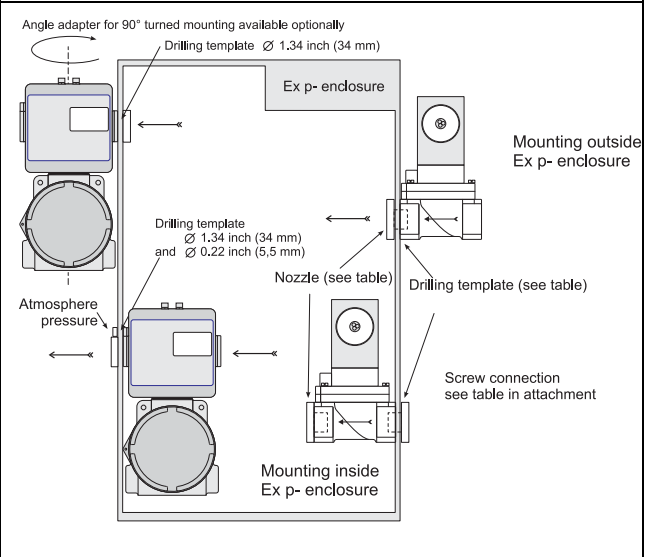


Figure 15: Mounting examples

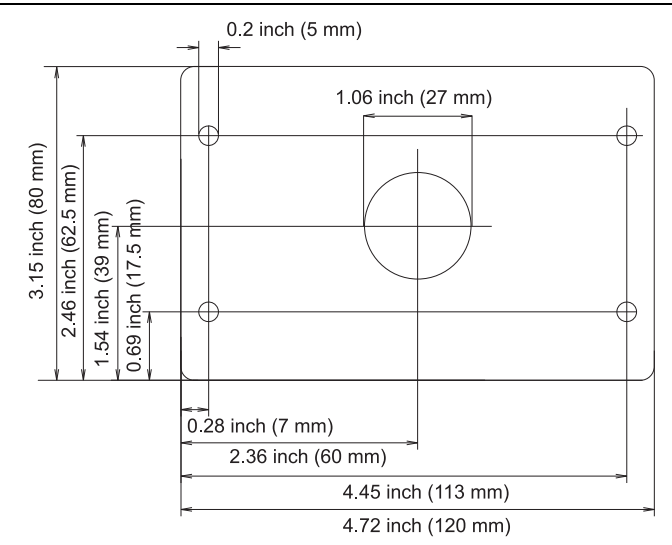


Figure 16: Dimensions and template BT851.0

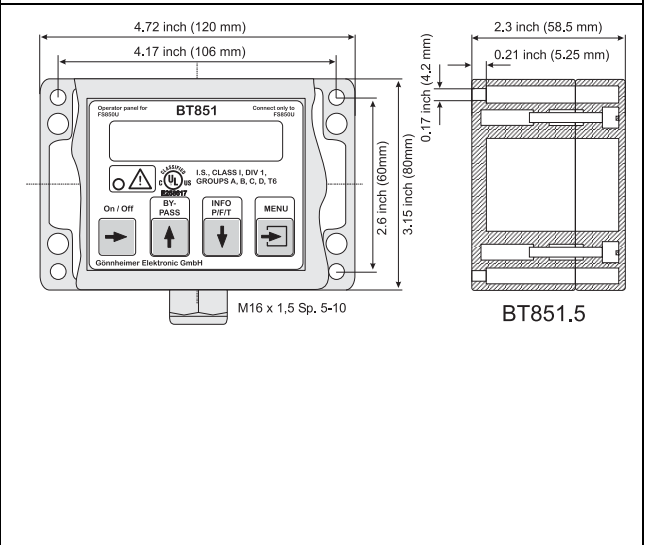


Figure 17: Dimensions and template BT851.5

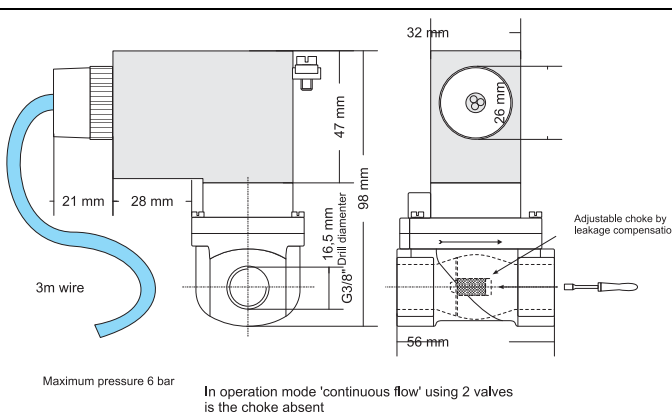


Figure 18: Dimensions digital solenoid valve

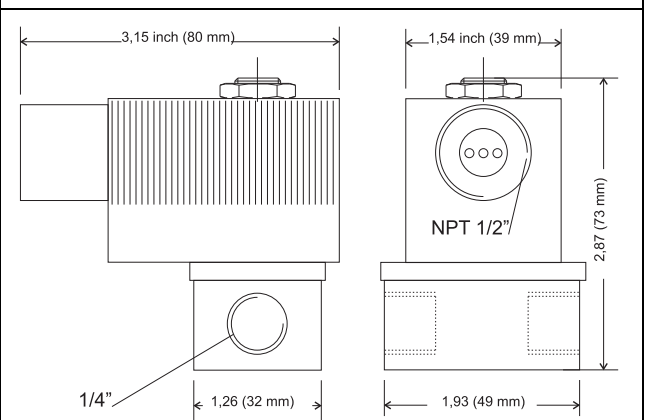
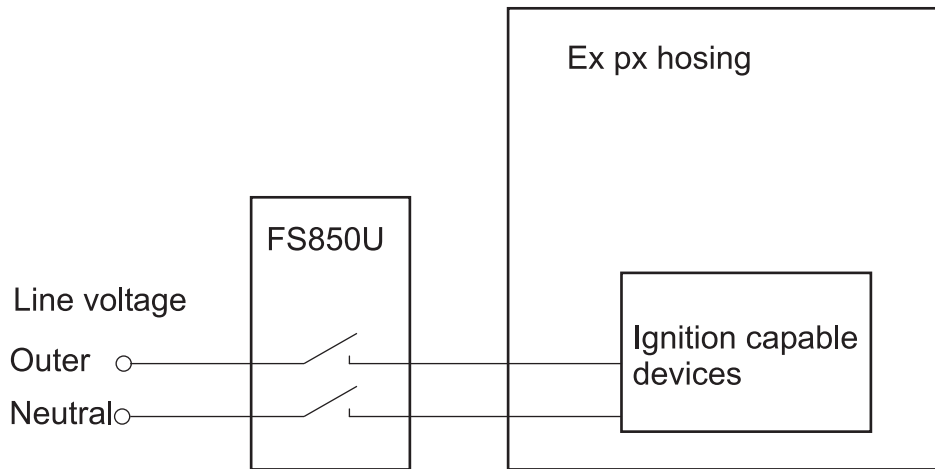


Figure 19: Dimensions proportional solenoid valve

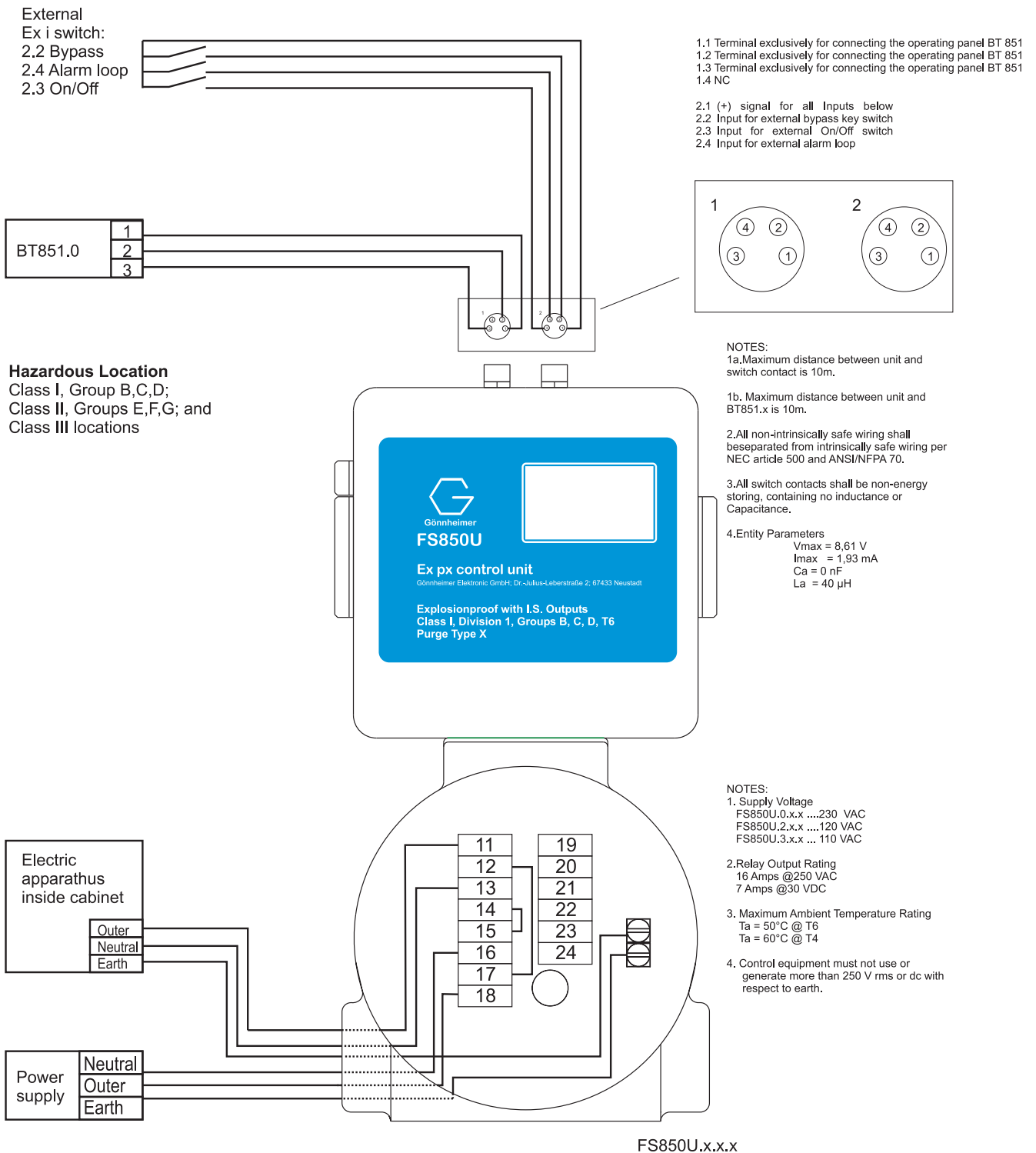
## 6.6 Shut off schematic

If this pressure drops below (at least) 0.8 mbar the control unit FS850U switches off the line voltage to secure the devices inside the cabinet. The shut off of the ignition capable devices has to be done on both wired (Outer and neutral) according the schematic below



Do not exceed the maximum switching power of FS850U relay contacts in technical details table in section 6.2.

### 6.7 Control drawing



## Gönnheimer Elektronik GmbH

http://www.goennheimer.de Email: info@goennheimer.de

Zertifiziertes  
Qualitäts-  
Managementsystem  
nach  
DIN EN ISO 9001

Dr.-Julius-Leber-Straße 2  
67433 Neustadt/Weinstraße  
Postfach 10 05 07  
67405 Neustadt  
phone: +49 (6321) 49919- 0  
fax: +49 (6321) 49919 - 41

Rev. A  
11/2006

Figure 20: Control drawing

## 6.8 List of Parameters

<b>System identification</b>	Installation no.:	Date:	
FS850U. .	Production no.:	Solenoid valve	BT851 Yes - No

Inputs	Description	Display	Value/ state
<b>Language</b>	F850S language	Language	
<b>Structure</b>			
<b>Valve</b>	Solenoid valve type used with this purging system?	Valves Tick box	P-Valve <input type="checkbox"/> D-Valve <input type="checkbox"/>
<b>additional DW 812</b>	Use of an additional DW 812?	DW Ext. Tick box	DW Ext. Y. <input type="checkbox"/> DW Ext. N. <input type="checkbox"/>
<b>Purging method</b>	Time based purging method (Integ N.) or integration purging method (Integ. Y.)	Integra. Tick box	Integ. Y. <input type="checkbox"/> Integ. N. <input type="checkbox"/>
<b>Operational mode</b>	Continuous flow (C. flow Y.) or leakage compensation (C. flow N.)	Cont. Flow Tick box	C. Flow Y. <input type="checkbox"/> C. Flow N. <input type="checkbox"/>
<b>Parameters</b>	Purge time	Pur. Time	
	Purge volume	Pur. Vol.	
	Minimum flow rate during purging procedure	Min. Fl. P.	
	Minimum flow rate during normal operation by op. mode continuous flow	Min.Fl. O.	
	Set-point flow rate by operation mode continuous flow	Rated Fl.	
	Pressure monitor, minimum pressure	Min. Pres.	
	Pressure monitor, maximum pressure	Max. Pres	
	Set-point pressure during purging	R. Pre. Pu.	
	Set-point pressure during normal operation	Rated Pr.	
	Pressure monitor, alarm pressure	Sig. Pr.	
<b>Codes</b>	Code for main menu	M-Code	
	Code for bypass	By-Code	
	Code to enable switching ignition-capable device	On/Off-C.	